

Wait On You Alone

Full Score

Words and music by Phil Campbell-Enns

Capo 7:

Musical score for the first system, featuring piano, violin, and cello parts. The piano part is in treble and bass clefs, violin in treble clef, and cello in bass clef. The key signature is one sharp (F#) and the time signature is 4/4. The piano part has a *mf* dynamic. The violin and cello parts have a *mf* dynamic. The piano part has a *mf* dynamic.

Capo 7: F2 C2 G/F D/C A F2 C2

Musical score for the second system, including vocal line and instrumental accompaniment. The vocal line is in treble clef with lyrics "Be our Rock and". The piano part is in treble and bass clefs. The violin part is in treble clef. The cello part is in bass clef. The key signature is one sharp (F#) and the time signature is 4/4. The piano part has a *mf* dynamic. The violin part has a *mf* dynamic. The cello part has a *mf* dynamic. The vocal line has a *mf* dynamic. The piano part has a *mp* dynamic. The violin part has a *mp* dynamic. The cello part has a *mp* dynamic.

G/F
D/C

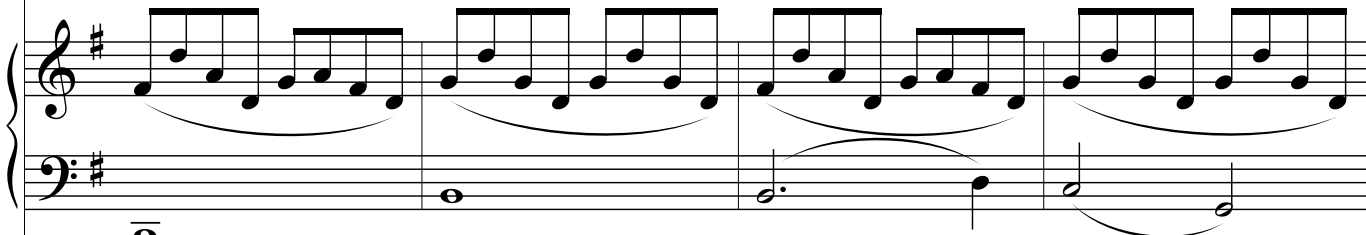
C/E
G/B

Em
Bm

F2
C2



our sal - va - tion, We will wait and not be sha - ken, When our world



Vln.



Vc.



G/F
D/C

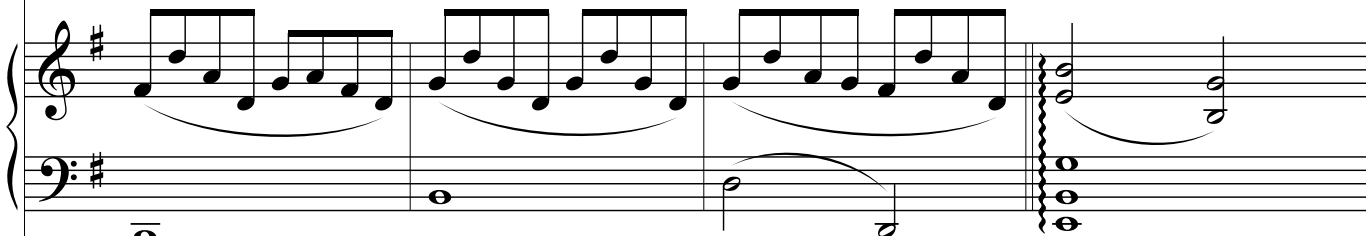
C/E
G/B

G sus
D sus

B *Am*
Em



feels un - cer - tain, We will find our strength in You. 1. We will wait in 3. Be our One and



Vln.



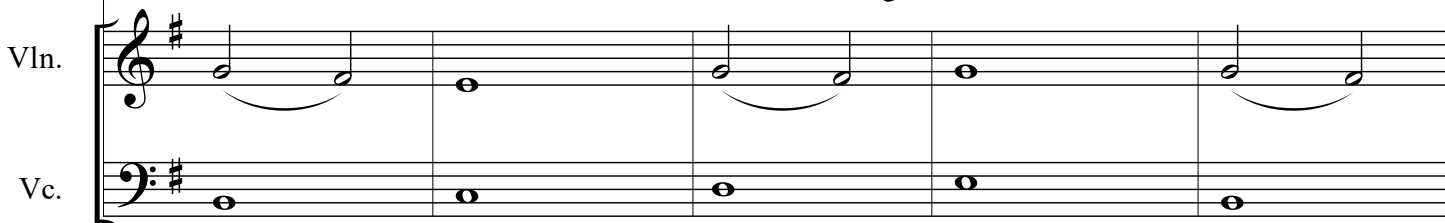
Vc.



C/E *Em* *F* *G sus* *G* *Am* *C/E* *Em*
G/B *Bm* *C* *D sus* *D* *Em* *G/B* *Bm*



si - lence, Lis - ten for Your guid - ance, Cling - ing to Your prom - ise, we
 On - ly, Br our help and glo - ry, Hope be - yond our know - ing, we

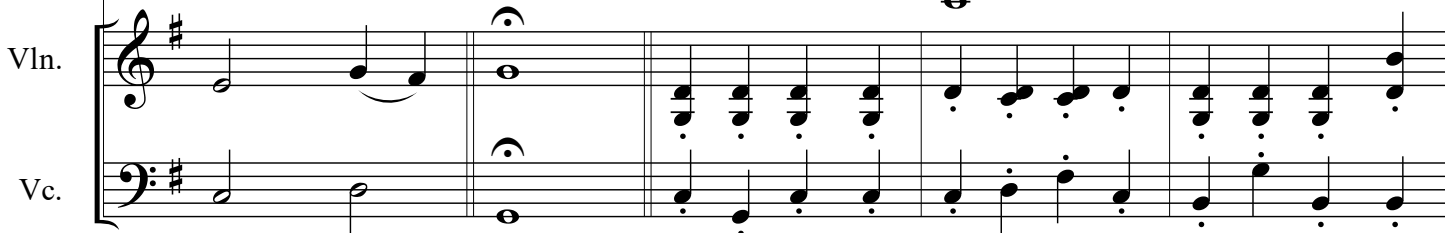
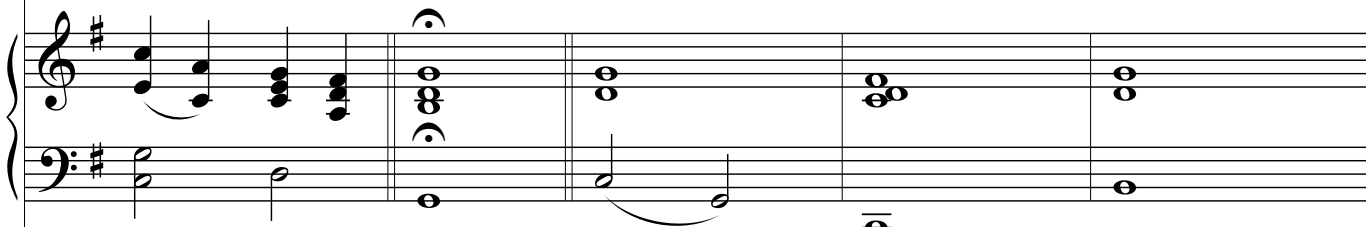


2nd time to Coda

F *F/G* *G* *C* **C** *F2* *G/F* *C/E*
C *C/D* *D* *G* *C2* *D/C* *G/B*



wait on You a - lone. Be our Rock and our sal - va - tion, We will wait and
 wait on You a



4 *Em* *F2* *G/F* *C/E* *G sus* *G*
Bm *C2* *D/C* *G/B* *D sus* *D*

A vocal line in treble clef with a key signature of one sharp (F#). The melody consists of quarter notes and half notes, with a final quarter rest. The lyrics are: "not be sha-ken, When our world feels un-cer-tain, We will find our strength in You."

not be sha-ken, When our world feels un-cer-tain, We will find our strength in You.

Piano accompaniment for the first system, including grand staff (treble and bass clefs) and a separate bass line. The piano part features chords and moving lines in both hands, with some notes tied across measures.

Violin (Vln.) and Violoncello (Vc.) parts for the first system. The violin part consists of eighth-note chords, while the cello part consists of eighth-note chords.

D *Am* *C/E* *Em* *F* *G sus* *G*
Em *G/B* *Bm* *C* *D sus* *D*

A vocal line in treble clef with a key signature of one sharp (F#). The melody consists of quarter notes and half notes. The lyrics are: "2. Hearts poured out be-fore You, Seek-ing peace and re-fuge,"

2. Hearts poured out be-fore You, Seek-ing peace and re-fuge,

Piano accompaniment for the second system, including grand staff (treble and bass clefs) and a separate bass line. The piano part features chords and moving lines in both hands, with some notes tied across measures.

Violin (Vln.) and Violoncello (Vc.) parts for the second system. The violin part consists of quarter notes, while the cello part consists of quarter notes.

Am *C/E* *Em* *F* *F/GG* *C*
Em *G/B* *Bm* *C* *C/DD* *G*



Trust-ing You will res - cue, we wait on You a - lone.

